



WROCLAW
MEDICAL UNIVERSITY



THOUSANDS OF REASONS TO BE PROUD OF:

4

FACULTIES

6000

**STUDENTS
IN TOTAL**

2

**ENGLISH DIVISION STUDIES:
MEDICINE AND DENTISTRY**

120

**ALMOST 120 STUDENT
ORGANISATIONS**

Everything you have to know about admission process is available on the website:
rekrutacja.umw.edu.pl/en/



Like our admission fanpage on Facebook @rekrutacjaumedwroc



WE STRIVE FOR PERFECTION

Wroclaw Medical University

is formed on three pillars – **didactics, science** and **clinical activity**. In each of them we strive for perfection. The University is listed on the prestigious Shanghai Ranking and present in international rankings like URAP. Our scientists conduct significant research – the rector prof. Piotr Ponikowski has for several years been mentioned in the group of the most cited scientists in the world according to the Clarivate Analytics Global Highly Cited Researchers list.

Our experts sit in international bodies, often preparing internationally implemented standards of conduct. The future belongs to the young, that's why we try to seek out and support young talents. Students and PhD students quickly gain the opportunity to collaborate on projects at the University, gaining invaluable experience. When investing in modern equipment, we do not forget that people are the best investment.



WROCLAW – WELCOME TO THE MEETING PLACE

Wroclaw is the fourth largest city in Poland with over a thousand years of tradition. Called “the Venice of the North” thanks to its 12 islands and 130 bridges over the Odra River, the Lower-Silesian capital is a meeting place for people of science, business and culture. The local universities attract thousands of students every

year, offering them not only the highest level of education, but also a chance to live in a historical yet modern city full of music and art, with rampant nightlife and vast job opportunities. Wroclaw is also known for its medical traditions, dating back to the 13th century when the first city hospital was founded. Over the years



Through the years many renowned doctors lived and worked here. Starting with Alois Alzheimer, a neurologist, psychiatrist and finder of the Alzheimer’s Disease, microbiologist Ludwik Hirszfeld who established the basis of the blood groups science and two Nobel prize winners, Robert Koch awarded for the creation of modern bacteriology and Paul Erlich, one of the pioneers of chemotherapy.



ENGLISH DIVISION STUDIES AT WROCLAW MEDICAL UNIVERSITY: MEDICINE

6-year-long General Medicine studies Tuition fee: 52 000 PLN/year

The English program of medicine consists of six successive academic years of medical, preclinical and clinical studies. Part I of the study, the preclinical (or theoretical) two years is devoted to the subjects such as: anatomy, histology, embryology, genetics, immunology etc. Foreign students also take Polish language classes in order to be able to communicate with the patients from the third year onwards. Part II of the study, the clinical four years, starts in the third year with pathology, pharmacology,

microbiology, paediatrics, surgery etc. The whole medical spectrum of clinical sciences will be covered by the end of the sixth year. After successfully completing all work required during these six years, and after having passed all prescribed examinations, the student will receive the title „lekarz” (equivalent to „doctor of medicine” – MD). The diploma is recognized in EU and EFTA countries, USA, Canada, India, Taiwan, Thailand, and many others.



ADMISSION REQUIREMENTS

There are no entrance exams to Wroclaw Medical University. Admission requires submitting results from three subjects presented on the high school graduation certificate:

- biology (**highest level**),
- chemistry (**highest level**),
- physics or mathematics (**highest level - points multiplied by 1; lower levels - points multiplied by 0,8**).

We also require a certificate of eligibility and an English language certificate confirming proficiency on **B2 level** (*more information on our website*).

ENGLISH DIVISION STUDIES AT WROCLAW MEDICAL UNIVERSITY: DENTISTRY

5-year-long Dentistry studies Tuition fee: 61 000 PLN/year

The English program of dentistry consists of five successive academic years of dental, preclinical and clinical studies. Part I of the study, the preclinical (or theoretical) two years at the Dental School, is devoted to the following subjects: chemistry, biophysics, anatomy, histology, embryology, etc. Preclinical dental courses include: anatomy of teeth, physiology of masticatory systems, ergonomics in dentistry, dental materials, preventive dentistry etc. Foreign students also take Polish language classes in order to be able to communicate with the patients from the third year onwards. Part II of the study, the clinical three years, starts in the third year with

pathomorphology, pharmacology, microbiology, immunology etc. Clinical dental courses include: prosthetic dentistry, oral surgery, maxillo-facial surgery, dental radiology etc. The whole medical spectrum of clinical sciences will be covered by the end of the fifth year. After successfully completing all work required during these six years, and after having passed all prescribed examinations, the student will receive the title „lekarz dentysta” (equivalent to „doctor of dental medicine” – DMD). The diploma is recognized in EU and EFTA countries, USA, Canada, India, Taiwan, Thailand, and many others.

ADMISSION REQUIREMENTS

There are no entrance exams to Wroclaw Medical University. Admission requires submitting results from three subjects presented on the high school graduation certificate:

- biology (**highest level**),
- chemistry (**highest level**),
- physics or mathematics (**highest level - points multiplied by 1; lower levels - points multiplied by 0,8**).

We also require a certificate of eligibility and an English language certificate confirming proficiency on **B2 level** (*more information on our website*).





SCIENCE NEEDS ALLIES

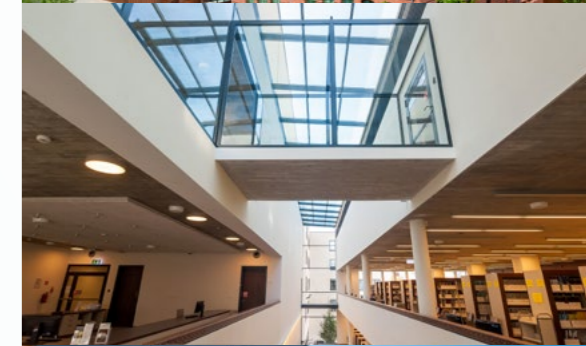
Wroclaw Medical University actively cooperates with many centres in the country and abroad. The university benefits from multiple international agreements, which link us with universities from all over the world. We conduct joint research, organise internships and apprenticeships and give our students and employees a chance to visit our partners abroad. Every year more universities decide to work with us within the Erasmus+ program and the number of students and employees benefiting from it is still growing. The university publishes

five scientific periodicals, including our most prestigious journal "Advances in Clinical and Experimental Medicine" (Impact Factor 1.727). What's more, we collaborate with other Wroclaw universities as a member of The Board of Chancellors from the universities in Wroclaw and Opole and by creating interdisciplinary research teams. We also take part in the Academic Wroclaw program which promotes our city as a dynamically developing academic centre. Furthermore, we are constantly developing our scientific and teaching basis for the sake of our students.

MODERN DIDACTIC BASE

Wroclaw Medical University has made many prestigious investments in its infrastructure. That is why today our campus is an eclectic mix of current and historical buildings dedicated to didactics and research. In 2013 the brand new Pharmacy Faculty building was established on Borowska str., which today hosts also our Biobank laboratories. Furthermore, in 2015 the Medical Science Information

Centre became a part of the Historical Campus on Chałubińskiego str., housing the main university library and central administration offices. The newest addition to our didactic base is the Medical Simulation Centre established in 2018. The interiors of a historic XIX-century laundry have been transformed into a mini-hospital filled with high-end phantoms for our students to train on.



CLINICAL BASE – THE BEST IN THE REGION

The University Clinical Hospital by the name of Jan Mikulicz-Radecki is currently one of the biggest treatment facilities in Poland. It became a part of the University in 2001 primarily as the Academic Clinical Hospital based on three other hospitals in Wrocław. A new stage of its functioning began in 2003, when most of its units were

transferred to the New complex on Borowska str. Until 2017 the university overlooked two hospitals, but in that year the WMU authorities made a decision to merge them in to one University Clinical Hospital.

The UCH can boast of numerous pioneer treatments in Poland and Europe, e.g. in the fields of

reconstructive medicine, transplants and oncology. Its pride is the Transregional Centre for Paediatric Oncology “Cape Hope”, which is one of the European leaders in terms of the number of bone marrow transplants performed on children. The Academic Stomatology Polyclinic, where dentistry students can learn how to treat patients, is also an important part of our clinical base.





STUDENT HOUSING

Wroclaw Medical University has two dormitories, offering rooms to all of our students. They are located in close proximity to the Historical Campus, in quiet, serene surrounding by the Odra river and just a few minute walk from the bus and tram stations, from where you can reach the city center in less than 15 minutes.

The rooms are fully furnished and the common spaces on each floor include a kitchen and a laundry room. On the ground floor there is a study room and common room with a TV and games

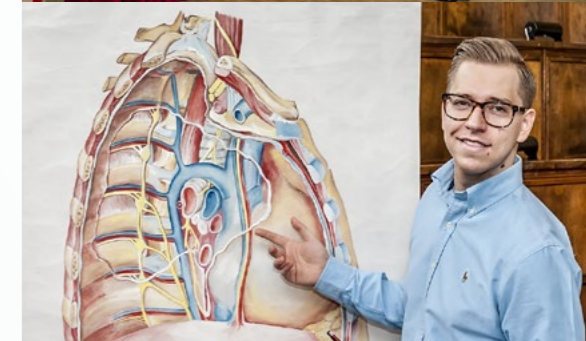
available. Each of our two dormitories has wireless internet access, coffee and snack machines, a student clinic, spacious parking lot, bicycle shelter, a 24-hour reception and building monitoring.

STUDENT ACTIVITY

There are almost 120 student organisations operating at Wroclaw Medical University, open equally to Polish and foreign students:

- The Student Council and English Division Student Council
- The "Pearl" Sailing Club
- IFMSA Poland – the Polish branch of the International Federation of Medical Students Associations
- Polish Stomatology Students Association
- Student Laboratory Diagnosticians Society
- Polish Pharmacy Students Association
- Student Scientific Society
- Student Scientific Clubs dedicated to English speaking students
- Sports Club with a few dozen sections dedicated to different disciplines
- Medici Cantantens Choir

All of those organizations offer a chance to develop scientific, artistic and sports skills, and also act on the behalf of the community.



WHY SHOULD YOU CHOOSE WROCLAW?



**OVER 100
THOUSAND STUDENTS**



**CHARMING OLD TOWN
AND UNESCO-STATUS**



**CULTURE AND ART:
INTERNATIONAL NEW HORIZONS
FILM FESTIVAL, NATIONAL MUSEUM,
MODERN ART GALLERIES**



**MUSIC: JAZZTOPAD,
ONE LOVE SOUND FEST,
WROSOUND**



**ENTERTAINMENT: ZOO, AN
AQUAPARK, HYDROPOLIS:
THE MUSEUM OF WATER**



**LEISURE: CITY BEACHES, Odra
RIVER BOULEVARDS**

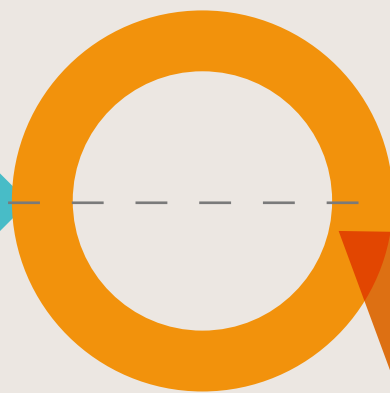


**TOURISM: LOWER SILESIA
FROM THE MOUNTAIN TOPS
TO HISTORICAL PALACES**



**TRANSPORTATION: TRAMS,
BUSES, RENTAL BICYCLES,
SCOOTERS AND CARS**





www.umw.edu.pl